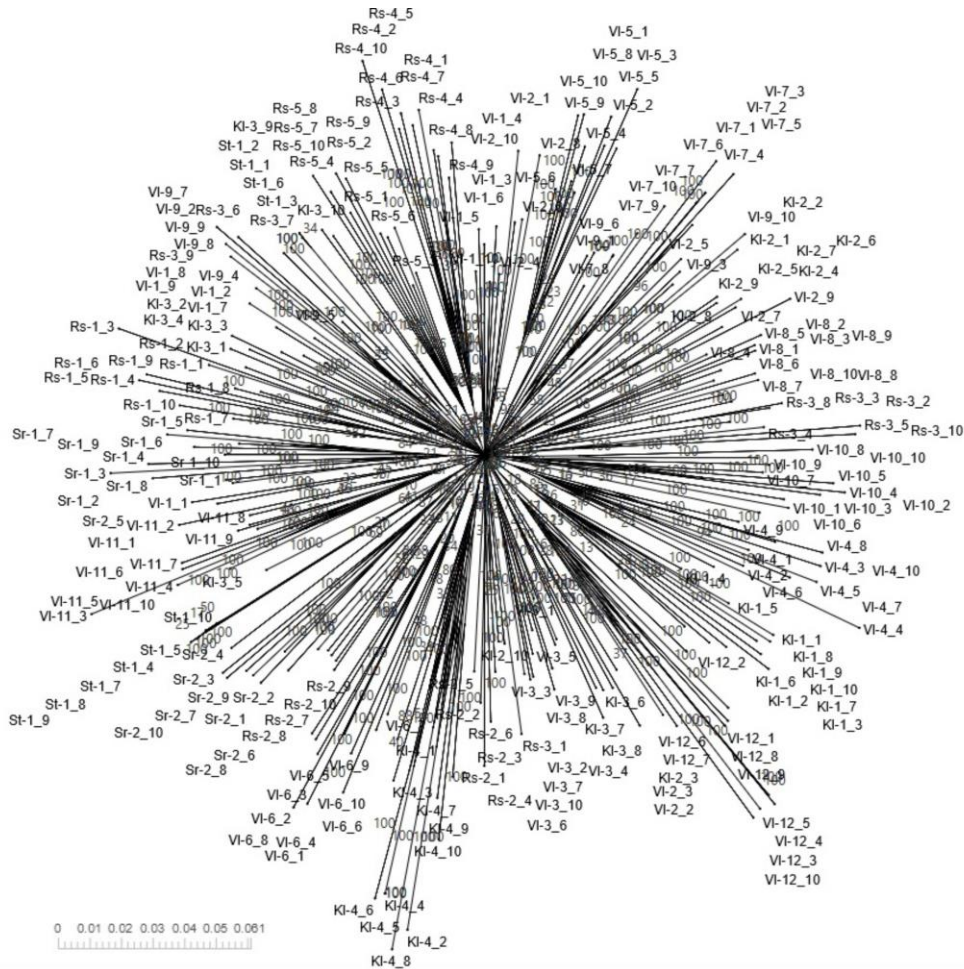
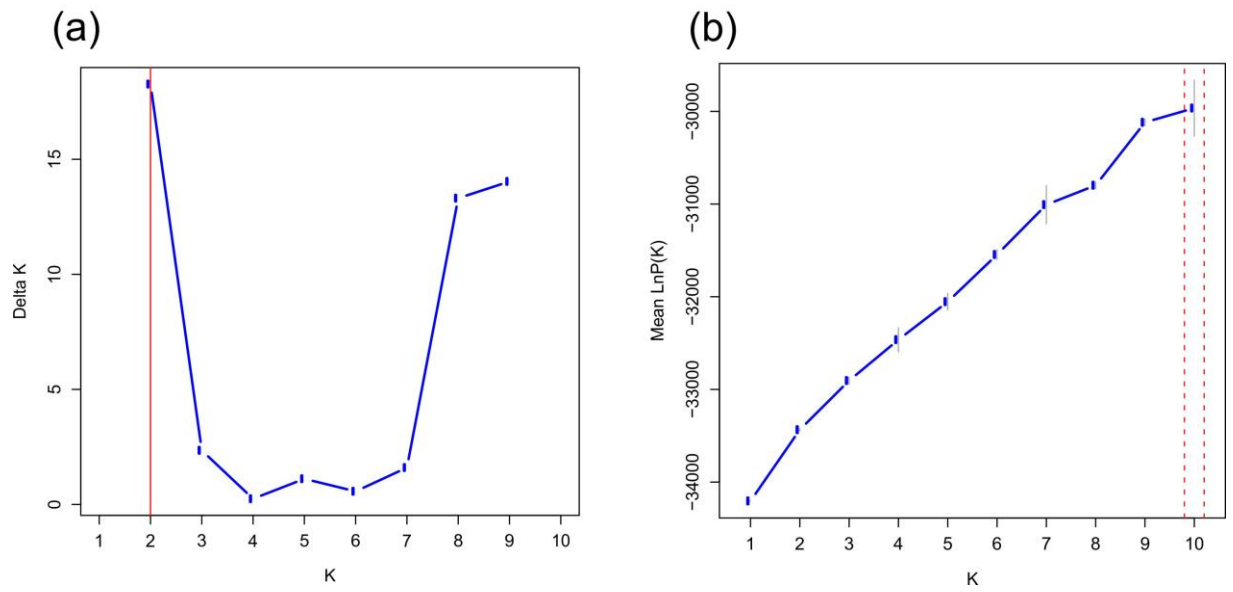


**Supplement to the article:** T. A. Kritskaya, A. O. Kondratieva, Yu. I. Kuliseva, A. S. Kashin  
 “Genetic and morphological conservatism of *Calophaca wolgarica*, a paleoendemic species  
 of the Southern East European Plain”



Supplemental figure A. A dendrogram obtained by Neighbour Net method for 260 *C. wolgarica* accessions based on ISSR analysis results.



Supplemental figure B. (a) – delta K values, the optimal is shown by the vertical red line, (b) – average probability  $P(K)$  and variance for each value of K